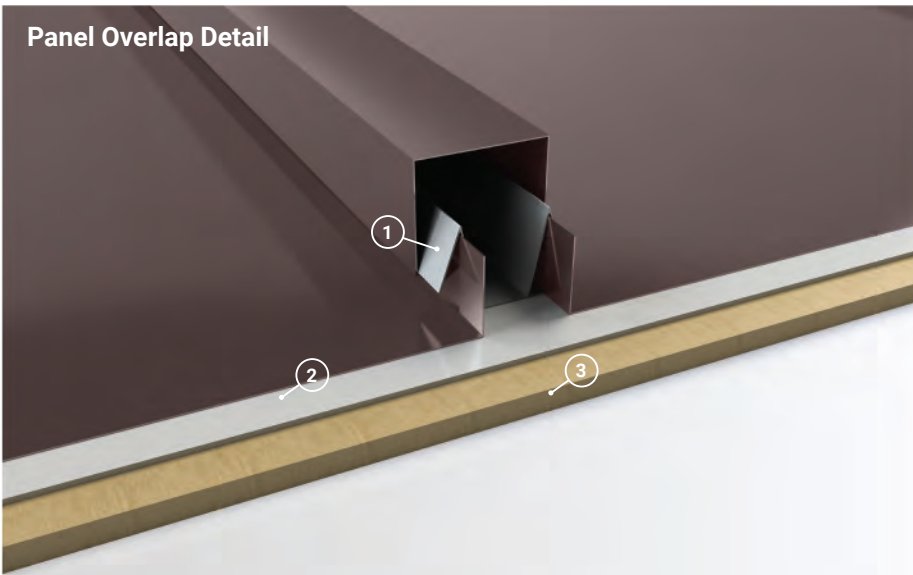


Panel Overlap Detail



1. **Clip System:** Fixed clip system allows for expansion and contraction of panels
2. **Underlayment:** High Temp Ice & Water for roof application.
3. **Substrate:** Plywood substrate material shown

Standard Roof Coverage 14.5" (Actual 14.437") & 18.5" (Actual 18.437")

Standard Wall Coverage 14.5" (Actual 14.437") & 18.5" (Actual 18.437")
Vertical Orientation Only

Panel Gauges 22*, 24*

Fastener Options Concealed Clip System

Panel Length 3' to 43'+

Rib Height 1.5"

Roof Slope Minimum 3:12 or Greater

Variegated Assembly Available

Impact Rating Not Available

Wind Uplift Rating Not Available

Warranty Based on Paint System

* Grade 50

Version 5.2, 12/2021



Vented/Non Vented Ridge Cap



Hip Ridge



W Valley



Transition - High to Low



Transition - Low to High



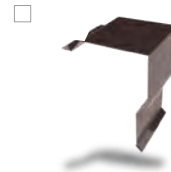
Open Prow Gable



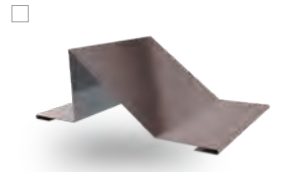
Closed Prow Gable



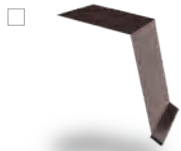
4" Mini Gable



6" Gable



Snowbreak



4" Eave



6" Eave



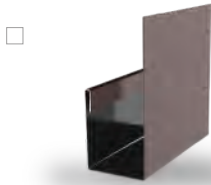
Style D Eave - 2" & 4"



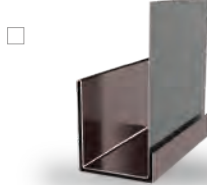
4" Mini Top Cap



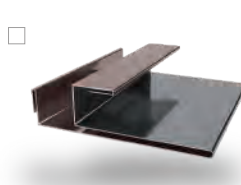
6" Top Cap



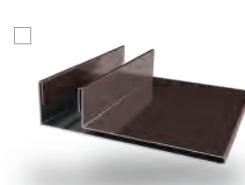
J Trim



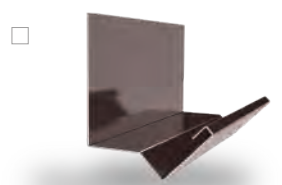
Double J Trim*



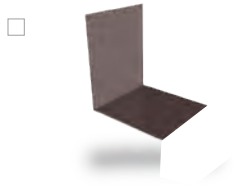
F & J Trim



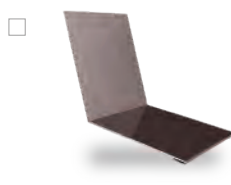
F Trim



Head Trim



Side Wall



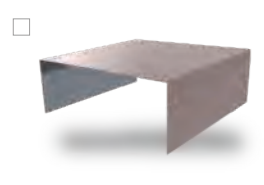
End Wall



Outside Corner



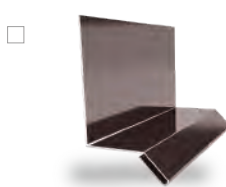
Inside Corner



Door Cap



Double Base Drip*



Base Drip



Broom Base



Wainscot



Fascia

* Color On Both Sides

